

Iradion® 250 Watt

Model 1625



PN 92-3014 A

Specifications

Model	Infinity 1625
Rated Optical Power (Watts)	250
Mode Quality (M2)	≤ 1.2
Beam Ellipticity	$< 1.2:1$
Beam Diameter (mm) $1/e^2$	2.5
Beam Divergence (mR, full angle)	5.2
Wavelength (μM)	10.57-10.63
Rise Time (μS)	< 75
Power Stability from cold (%)	$< \pm 4 \%$
Polarization	Vertical to mounting plane
Cooling	Water
Flow Rate (l/m g/m)	$> 9.8, 2.6$
Input power (Watts)	2800
Input Voltage / Current	50V / 56A
Weight (Kg / Lbs.)	23 / 50
Pulse Duration (ms)	1 - 3
Repetition Rate (khz)	1 - 150

Specifications are preliminary and subject to change without notice.

Laser Interface

Connectors:	15 pin D	RJ45
Fire command	Yes	Yes
Interlock	Yes	Yes
Fault signal	Yes	Yes
RS232 comm*	Yes	Yes
Ready signal	Yes	No
Key Switch control	Yes	No
Forward RF sig.	Yes	No
Reflected RF sig.	Yes	No
Lase Light signal	Yes	No
Temperature Warn	Yes	No

*The laser control card can be monitored via RS232 communications. A variety of signals, laser information, and the temperature can be interfaced to your host controller.

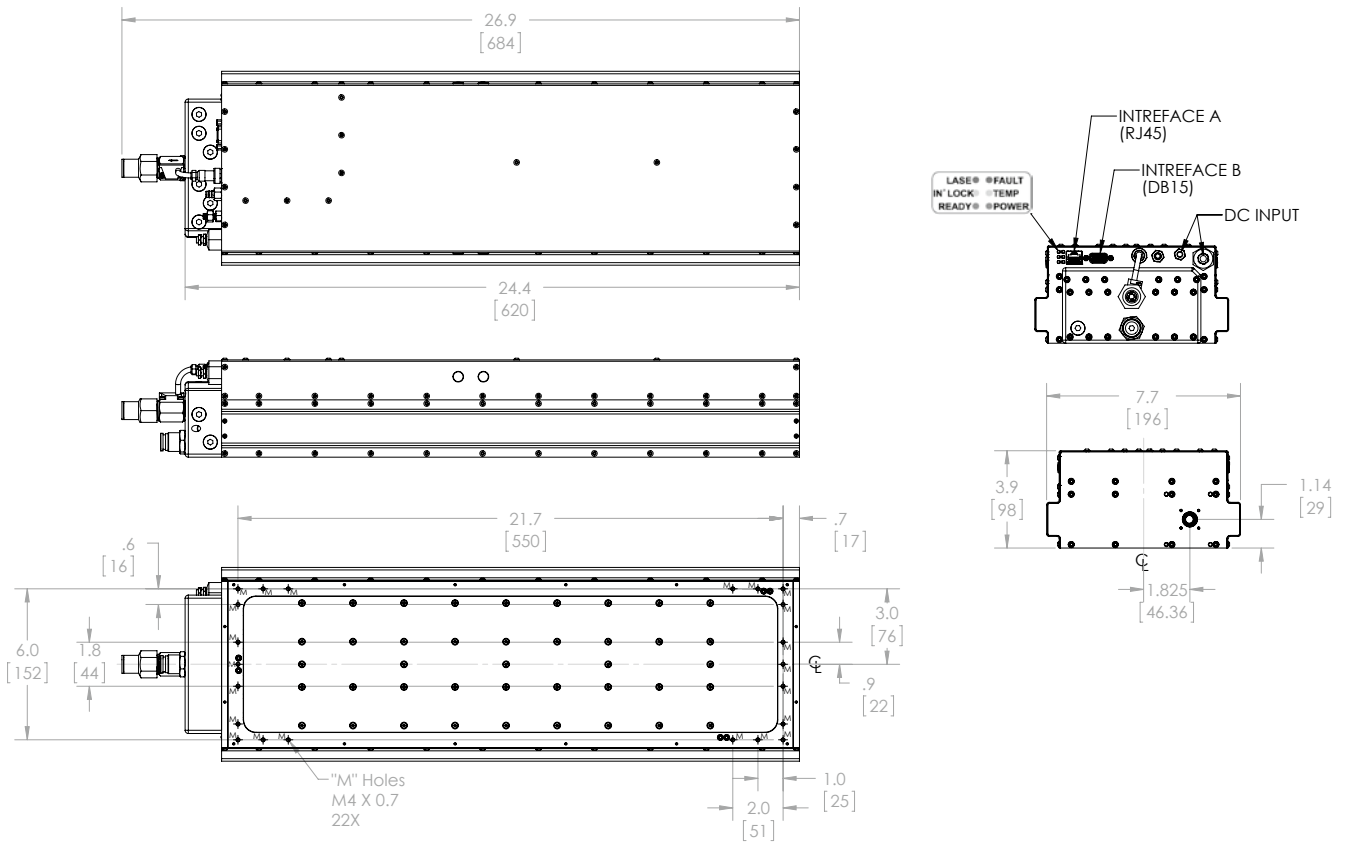
Indicator lights:

LASE	●	●	FAULT
IN LOCK	●	●	TEMP
READY	●	●	POWER

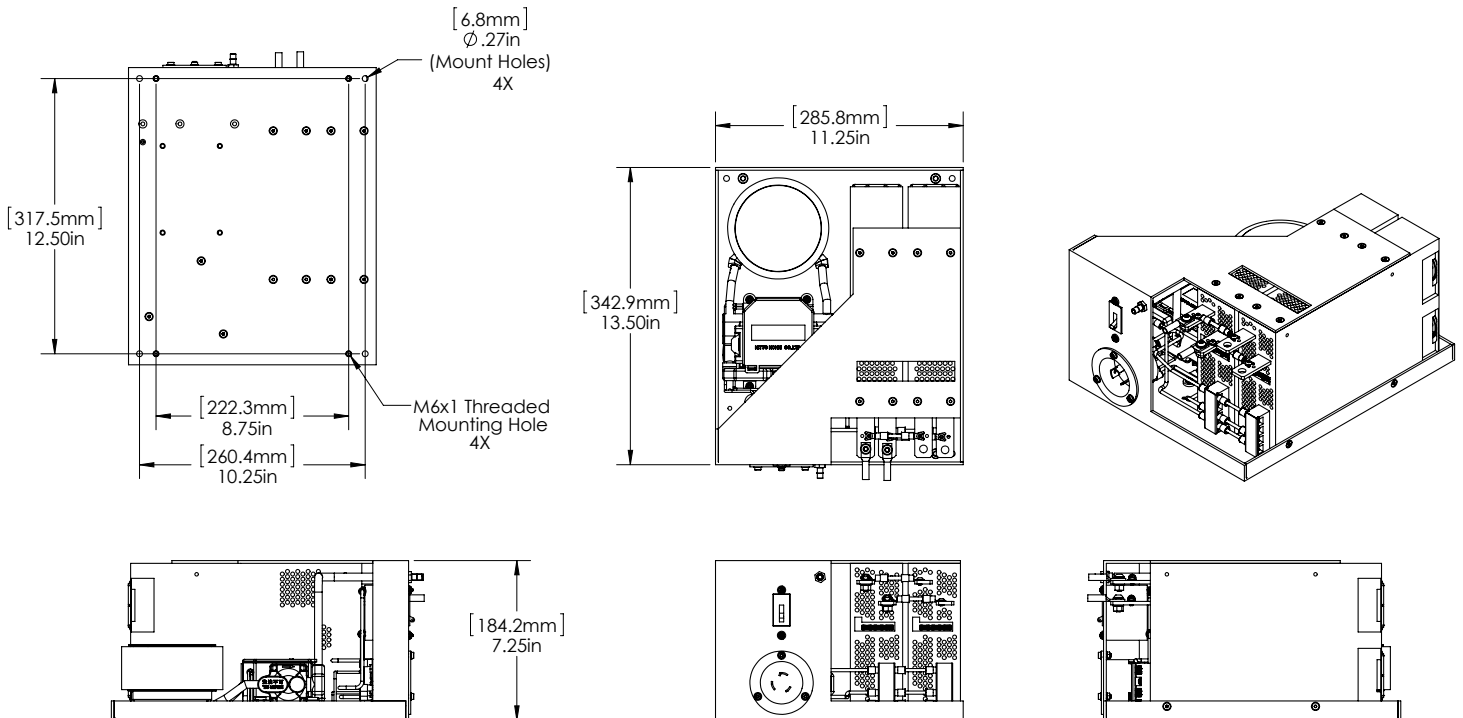
www.iradionlaser.com

IRADiON
Ceramic Core CO₂ Lasers

Dimensions



Dual Power Supply Assembly



Iradian Laser, Inc.
51 Industrial Drive
N. Smithfield, RI 02896
Tel: +1-401-762-5100
Fax: +1-401-762-5111
www.iradionlaser.com



Invisible Laser Radiation
 Avoid eye Skin exposure to direct
 or scattered radiation.
 Class 4 Laser Product

RoHS